

IPC-6+

Integrated WizarSwitch

User Guide



Thank you for purchasing our COMM Integrated Control Switches!

COMM Integrated Control Switches (IPC Series) - Designed to control your Audiovisual Equipment in the most simplified ways via RS-232 commands; reasonably priced and works with most projectors and plasma displays.

One Touch Selection with LED Back-Lit Indications on the selectors' buttons, you can easily control your displays with its various selector buttons (e.g. select the different input source, volume and/or screen controls etc)

Built-In Signal Amplifiers of 250MHz / 350MHz bandwidths to minimize signal-loss worries.

Widely used in Classrooms, Auditoriums, Lecture Theatres, Conference Rooms etc.

MAIN FEATURES

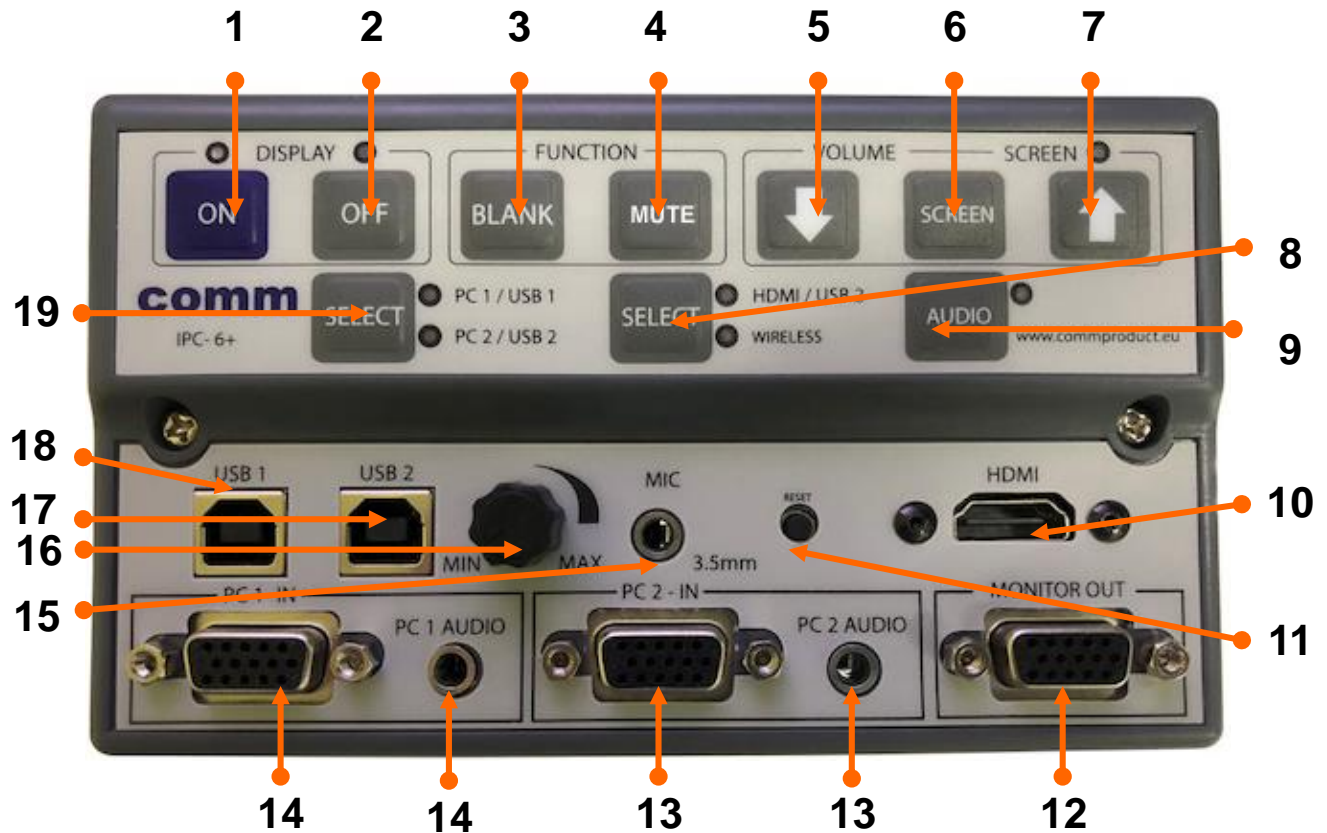
- Display Controller for your Projector, Display (Power ON/OFF, input source selections, volume control) via RS232 Commands
- One Touch Selection with LED Back-Lit Indications
- INPUTS :1 HDMI, 2 USB Type B , 2 VGA with 2 mini jack audio, 1 mini jack Microphone
- OUTPUTS: 1 HDMI, 1 USB and 2 VGA
- Built-In VGA Selector and VGA Splitter
- Digital Volume Control for sound level adjustments
- Volume Control Knob for MIC Inputs sound adjustments
- **Optional:** Comm Contact Relay Module for Screen Control
- STANDBY mode - MIC Volume Control usable
- VGA Monitor Out - Monitor is usable even when projector is OFF

TABLE OF CONTENTS

1	Function Keys.....	1
2	Internal Board Connections.....	2
3	Connections.....	3
3.1	HDMI Connections.....	3
3.2	Power Connections.....	4
3.3	RS-232 Connections.....	5
3.4	Audio/VGA/ USB Connection	6
3.5	Contact Relay Module	7
4	Specifications.....	8
5	Standard Package.....	9
6	Troubleshooting.....	10
7	Notes.....	11
8	Connections Diagram.....	12

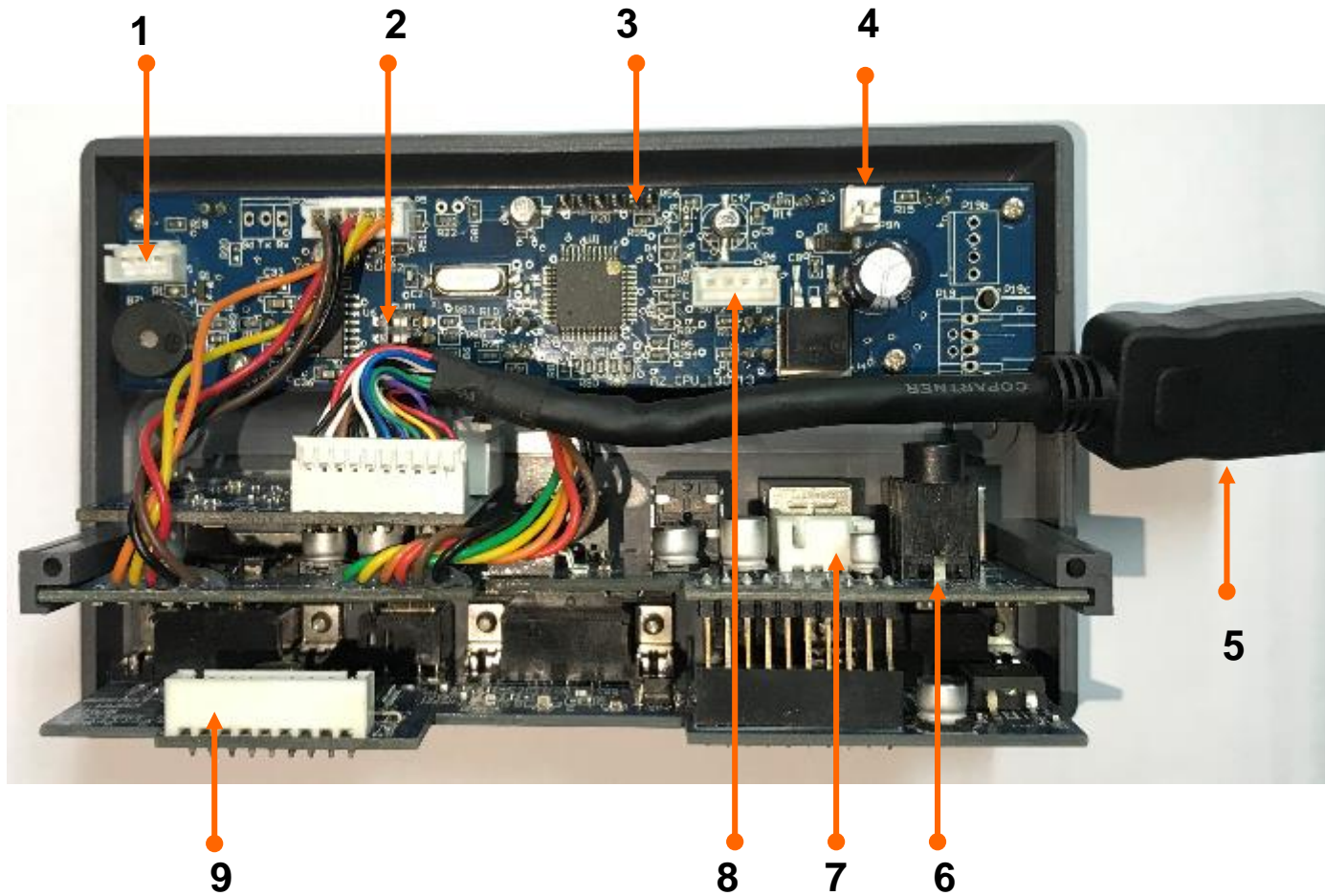
1. Function Keys

Model No: IPC-6+



- | | |
|--|---|
| 1. Display ON | 11. HDMI Reset |
| 2. Display OFF | 12. VGA Signal Monitor Out |
| 3. Picture Blank Toggle Button | 13. VGA 2 Signal and Audio Input |
| 4. Mute ON/OFF | 14. VGA 1 Signal and Audio Input |
| 5. Screen/ Volume Control DOWN | 15. MIC In – 3.5mm |
| 6. Screen Selector | 16. MIC Volume Control Knob |
| 7. Screen/ Volume Control UP | 17. USB 2 Input |
| 8. HDMI with USB 2 / Wireless Selector | 18. USB 1 Input |
| 9. Audio Selector | 19. PC1 / USB1 or PC2 / USB2 Signal In Selector |
| 10. HDMI Signal Input | |

2. Internal Board Connections



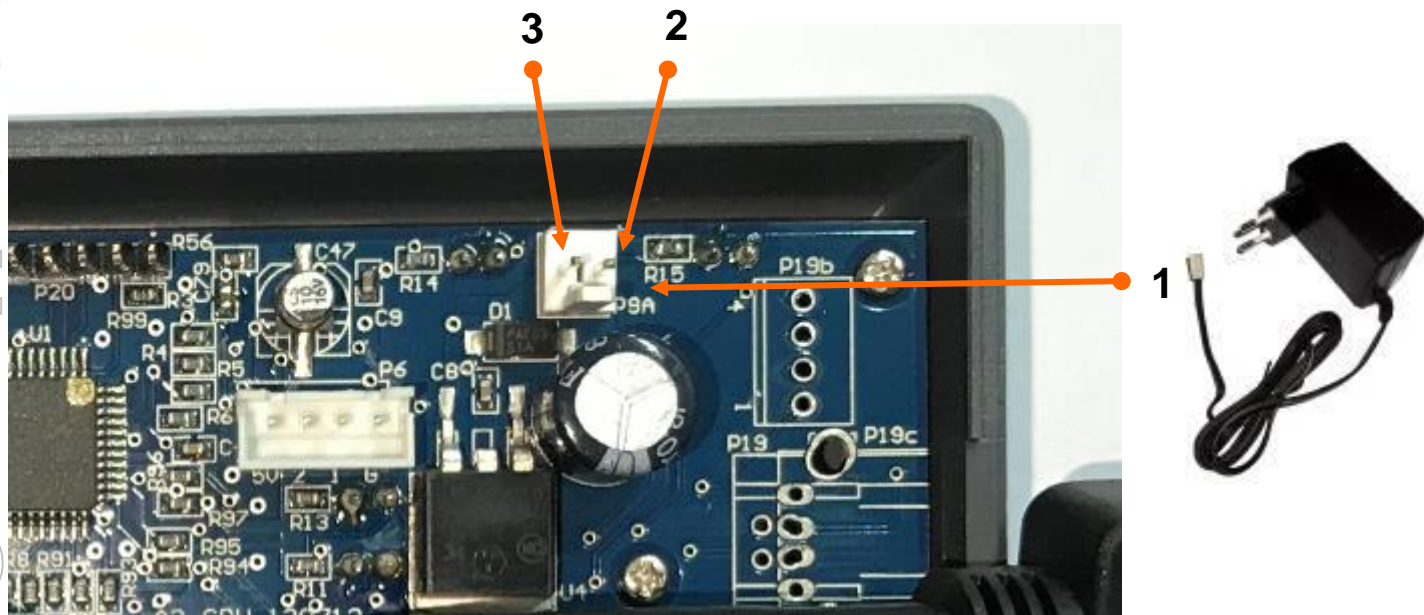
1. RS232 Connection
2. Dip-Switch Settings
3. Programming Connection
4. Power Connection
5. HDMI Connection
6. Mini Jack Audio Connection
7. USB Connection
8. Screen control (Optional CRM-1- contact relay module)
9. VGA Connection

3.1. HDMI Connection



1. HDMI (Female)

3.2. Power Connection



1. Direct plug-in to **12V DC Power Adapter**
(*Power Adapter Supplied with every purchase*)

OR

2. **Positive + on Power Adapter**
3. **Negative - on Power Adapter**

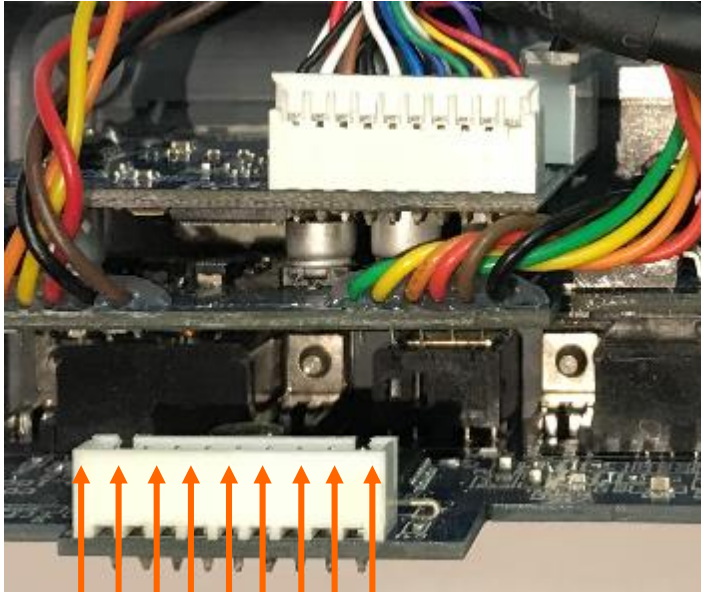
3.3. RS232 Connection



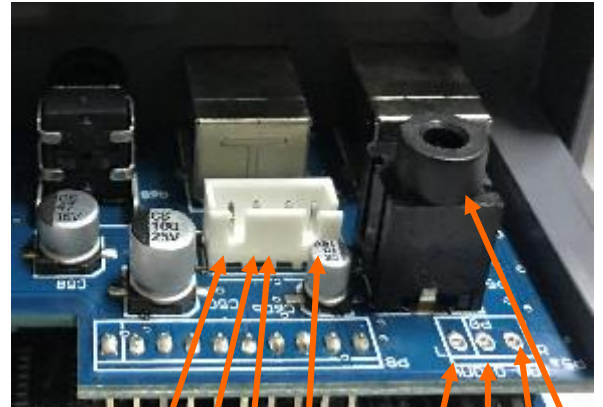
1. Ground (**GND**) – RS232 to Projector (GND)
2. Transmit (**TX**) – RS232 to Projector Received (RXD)

Please refer to Dip Switch Settings (Separate Appendix) for the different projectors' settings.

3.4. Audio, VGA & USB Connection



1 2 3 4 5 6 7 8 9



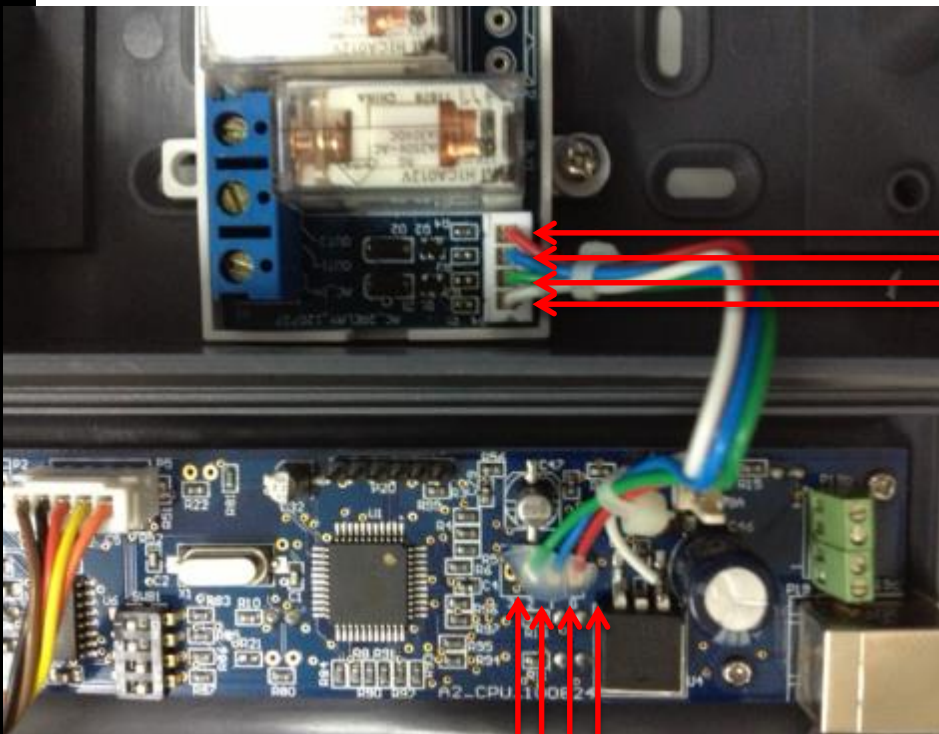
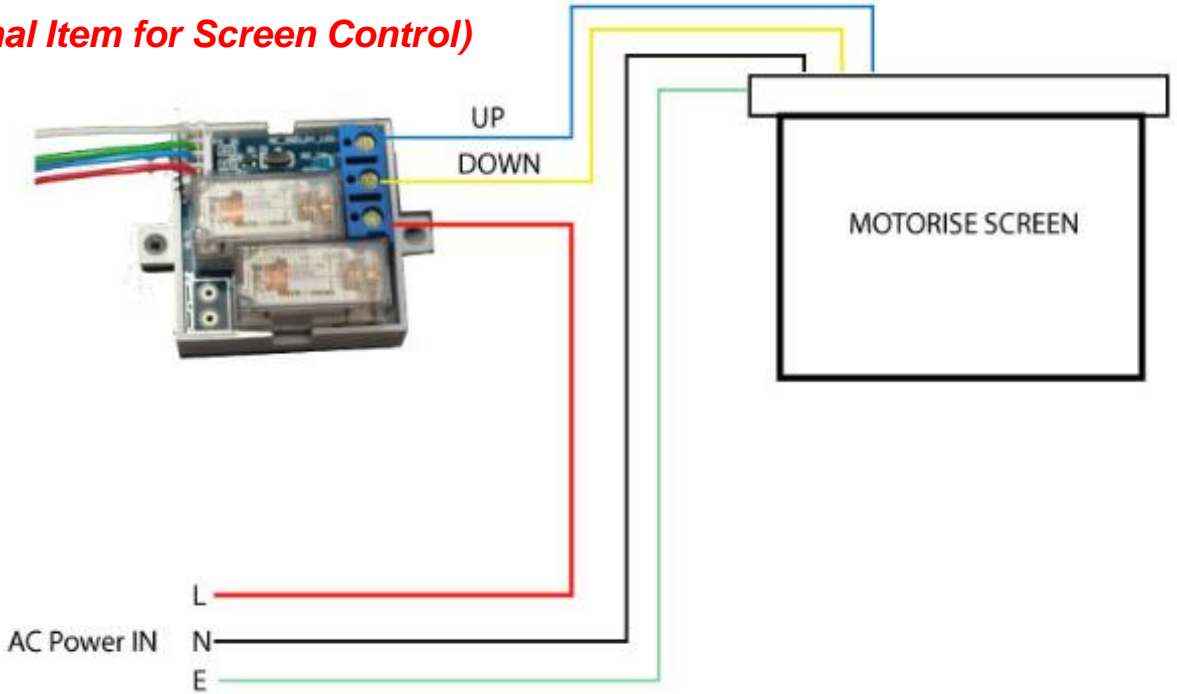
14 15 16 17 10 11 12 13

1. Red
2. Red Ground (GND)
3. Green
4. Green Ground
5. Blue
6. Blue Ground
7. H Ground (GND)
8. V Ground (GND)
9. H/V Ground (GND)

10. Audio Left
11. Audio Right & Left Ground
12. Audio Right
13. Mini Jack Audio
14. GND (Black)
15. D - (Green)
16. D + (White)
17. VBUS Red

3.5. Contact Relay Module Connection

Contact Relay Module CRM-1
(Optional Item for Screen Control)



- 1
- 2
- 3
- 4

- 4
- 3
- 2
- 1

Connection:

- 1: Ground (Red)
- 2: UP (Blue)
- 3: Down (Green)
- 4: 5VDC (White)

4. Specifications

MODEL : IPC-6+

A) Input

- **PC1 / PC2 Signal** - VGA (D-Sub 15-Pin Female)
- **PC1 / PC2 Audio** - 3.5mm Mini Jack
- **PC1 / PC2 USB** - USB Type B (Selection together with VGA)
- **HDMI Signal** - HDMI
- **Audio Signal** - Stereo
- **Microphone IN** - 3.5mm Mini Jack
- **USB** - USB TYPE B

B) Output

- **PC Signal** - VGA Bandwidth of 250MHz
- **PC Signal** - Monitor OUT, VGA Bandwidth of 250MHz
- **HDMI Signal**
- **Audio Signal**
- **Microphone**
- **USB** - 1 USB to interactive board or projector

C) Communication Control

- **Serial Control Port** - RS232
- **Baud Rate** - 9600, 19200, 38400, 115200
- **Data / Stop Bits** - 8 bits / 1 stop bit, No parity
- Programmable to 2 stop bit and EVEN parity

D) Selector Switch (with LED Back-Lit Indications)

- Display ON/OFF
- Blank (Toggle Button)
- Mute (Toggle Button)
- SCREEN/ AUDIO VOLUME (UP / DOWN) (for Screen or PC & HDMI Audio)
- VGA IN Selector (Switch between PC1 with USB 1 or PC2 with USB 2 Input)
- HDMI/ WIRELESS IN Selector (depend of device which got wireless on projector)
- AUDIO Selector (Select to adjust Audio volume control)
- VOLUME Control Knob (For MIC Inputs)
- HDMI Reset Button

E) Power Supply

- 12V DC 500mA Power Adapter

F) Product Dimension & Weight

- **Unit Dimension (W x H x D)** : 14.5cm x 8.6cm x 5.5cm (5.7" x 3.4" x 2.2")
- **Unit Weight** : 0.25 kg (0.55 lbs)
- **Box Dimension (W x H x D)** : 27.7cm x 10cm x 7cm (10.9" x 4" x 2.6")
- **Weight (Incl. Power Adapter)** : 0.64 kg (1.41 lbs)

All products information and specifications are subject to changes without prior notice.

5. Standard Package

Consists of the following:

(1) Integrated Control Switcher Unit



(2) 12V DC 500mA Power Adapter



6. Troubleshooting

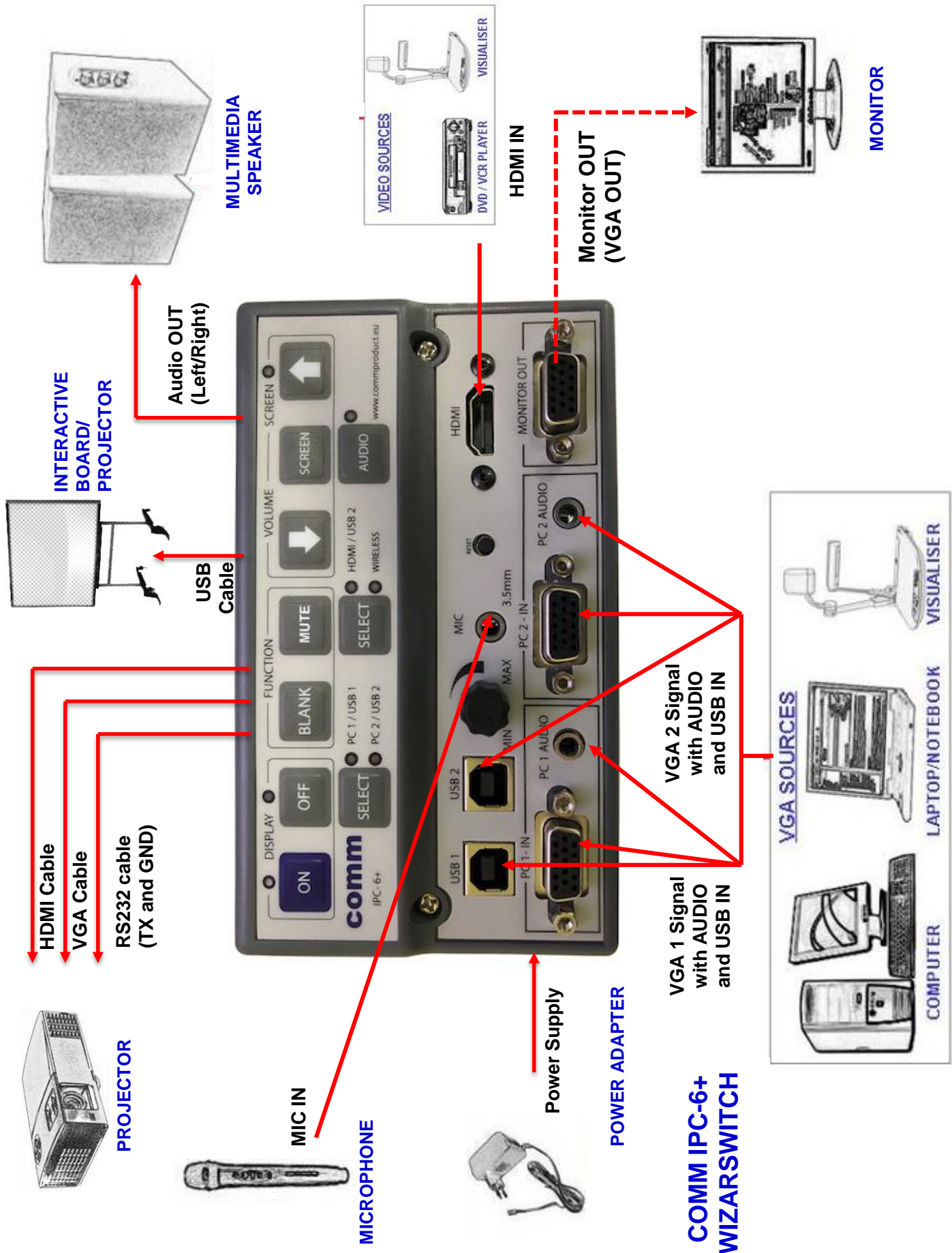
Problem	Solution
I have connected the power adapter to the control switch but there are still no LED lights indications on the control switch.	<ol style="list-style-type: none"> 1. Check the positive & negative on the power adapter is soldered at the right connection. (See page 4) 2. Verify the voltage of the power adapter is in accordance to your country current power voltage input
I have soldered the RS232 connections to the projector/plasma control port, but still unable to control the switch accordingly.	<ol style="list-style-type: none"> 1. Make sure the RS232 GND and TX soldering connections are soldered on the right pin on the controller PCB Board. (See page 6) 2. Check the RS232 connection settings on the projector/plasma for the correct baud rates or Pin Configurations. There may be a need to change the default baud rate setting on your projector/ plasma, if required. (See page 6) 3. Reprogramming is required. (Please refer to the programming manual) 4. Check RS232 connector is that short circuit.
Flickering images projected out after the connections to the control switch.	<ol style="list-style-type: none"> 1. Make sure the RGB Soldering connections on the Horizontal and Vertical is soldered correctly. (See page 3)
One of the colors projected out is missing, or the colors are washed off.	<ol style="list-style-type: none"> 1. Make sure the RGB Soldering connections on the Red, Green and Blue is soldered correctly. (See page 3)
If all the LED are lighted up on the control switch.	<ol style="list-style-type: none"> 1. Reprogramming is required. (Please refer to the programming manual)
If there are “Hissing” sound problem from your Active Speakers.	<ol style="list-style-type: none"> 1. This is a high Gain pre-Amp switcher, Please turn down the Speaker Volume and Control Volume up/down by switcher

If these troubleshooting tips do not solve your problems, please email us at support@commproduct.com or call us at (+65) 6515 1043.

7. Notes

1. Please remember to switch **OFF** IPC switcher's **POWER ADAPTER** during the soldering process or connection with the relay contact module

8. Connection Diagram



COMM IPC-6+ WIZARSWITCH

The logo for 'comm' is displayed in a large, bold, dark blue font. The letters are lowercase and have a slightly rounded, modern appearance. A small 'TM' trademark symbol is positioned to the upper right of the final 'm'. The logo is centered horizontally and is set against a white rectangular background that has a subtle drop shadow.

For additional information, please contact us at:

info@commproduct.com

Customer Care HelpDesk: **support@commproduct.com**

All products information and specifications are subject to changes without prior notice.

Last updated as at 01-Nov-2018

© Comm Products Technologies Pte Ltd – 2018